

# BAE Systems Digital Intelligence Consulting Excellence

Find out what to expect when working with us, and how our people go the extra mile to put our customers first.



Digital  
Intelligence

**BAE SYSTEMS**

# Section I: Who are we?

BAE Systems Digital Intelligence is home to more than 4,500 digital, cyber and intelligence experts. We work collaboratively across 10 countries to collect, connect and understand complex data, so that governments, nation states, armed forces and commercial businesses can unlock digital advantage in the most demanding environments. Launched in 2022, Digital Intelligence is part of BAE Systems, and has a rich heritage in helping to defend nations and businesses from advanced threats.

BAE Systems Digital Intelligence is proud to champion the Management Consultancies Association's (MCA) Consulting Excellence initiative and support its objective of improving the quality of every consulting engagement.

These values are also underpinned by our Code of Conduct which describes our culture and sets out the high standards we expect from our employees in everything they do, whatever their role, wherever they operate.

Our ethical approach is demonstrated by policies covering diversity and inclusion, data privacy, employee support, conflicts of interest, the environment and communities. In this guide, we will show you what you can expect when working with us and how we invest in our people to provide you with consulting excellence every time.

## What does it mean for you?

For us, adhering to the MCA framework is about more than just compliance; it means being customer-obsessed and empowering our people to provide the best experience and outcome possible. Our core values of 'Trusted, Innovative and Bold' chime with the MCA's desire for excellence. We're an organisation of principle that takes pride in our professionalism and integrity. Creating an environment within which our outstanding people can thrive and achieve their potential, in turn enables them to be utterly focused on the success of our clients and refuse to settle for 'good'. We want 'excellent', each and every time.

## Our commitment

We work by being a trusted partner to our customers, by constantly innovating to provide them with a competitive edge, by operating ethically and acting with integrity and respect. We are open and transparent in everything we do, striving to be diverse and inclusive. What's more, we never stop challenging ourselves to take more risks, act faster and embrace change to deliver our strategy. This benefits our clients and people. The commitment we make to our customers is guided by our values, understanding that it's not just what we do, but how we do it, that underpins our success:

## We are a trusted partner

- Absolutely everyone involved matters
- We deliver on our commitments
- We are honest and take responsibility
- We are focused on delivering our client's mission
- Our integrity is paramount

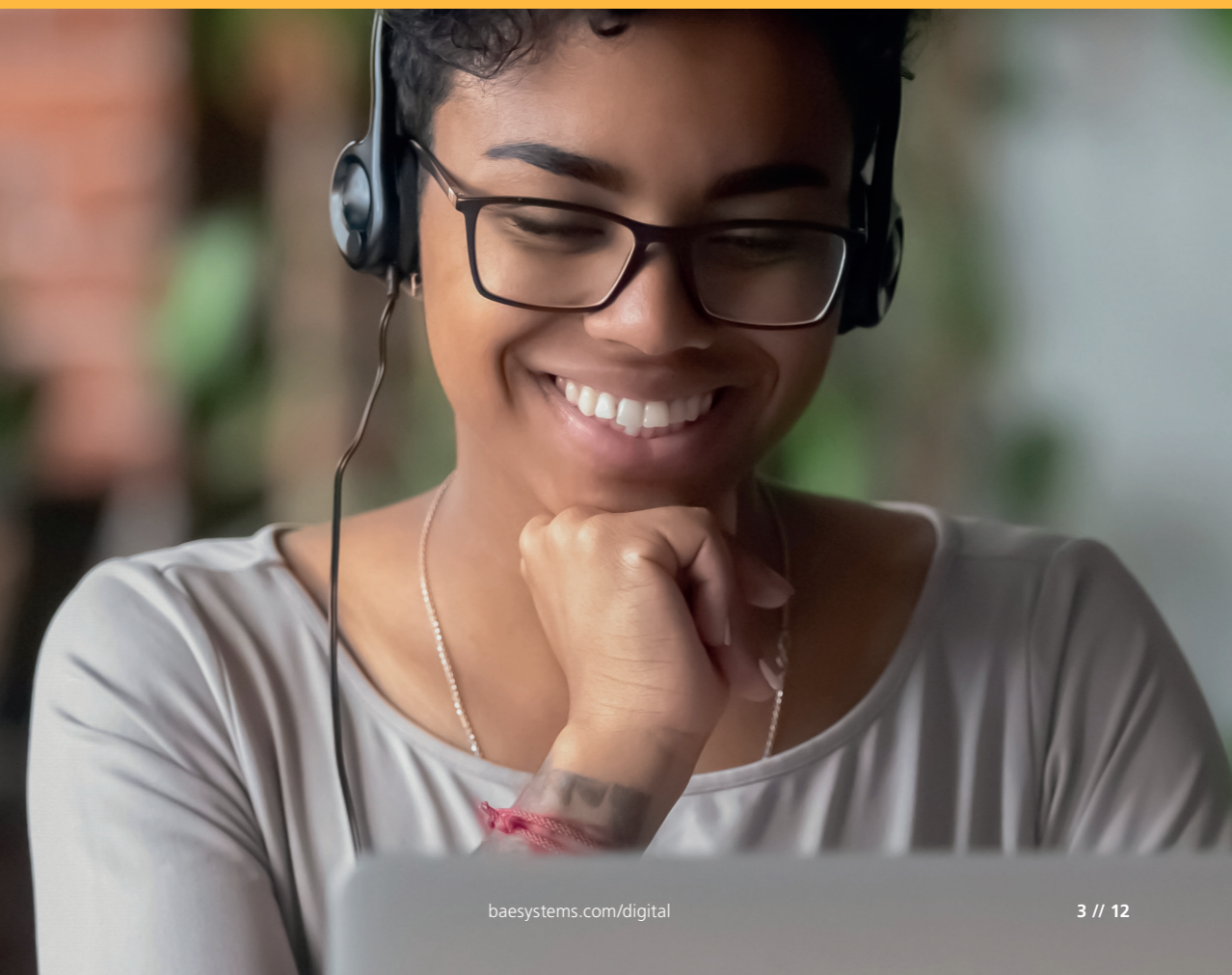
## We are innovative

- We create leading-edge solutions
- We value curiosity and imagination
- We empower our teams to do the best work possible
- We share our knowledge and experience with colleagues unconditionally

## We are bold

- We constructively challenge and take the initiative
- We operate with tenacity and resolve
- We accept challenges and manage risks
- We set stretch goals

“Through our **outstanding** people and capabilities, we put our **customers** at the centre of everything we do.”



# Section 2: How do we provide the best service possible?

We take a simple approach to delivering the highest levels of service to our clients. We hire the right people, with the right skills in the right roles, and support them with an organisational structure and working methodologies that allow them to stay close to the needs of our customers. The best people combined with the best processes, methodologies, frameworks and accelerators; it's a basic principal that has an immense effect. When joining BAE Systems Digital Intelligence, each of our consultants is assigned to a role based on their experience and area of specialism. But it doesn't stop there. We believe that learning is continuous and there's always opportunities to expand on our knowledge and experience. That's why we invest in growth by providing training and offer development opportunities that help our consultants develop their subject matter specialism and industry expertise. The industries we work in don't stand still, so why would we?

“Our drive for excellence is relentless. We seek to put the customer at the centre of everything we do; their mission is our mission. This mission alignment and focus, born out of our defence heritage, gives us a unique perspective. Our culture, tools, methods, knowledge and tradecraft are the backdrop for a continuous drive for quality, consistency and excellence in all that we do. Our people are our business; it is imperative we create the environment where they can achieve their potential. We seek to continuously improve and enhance this environment through feedback, transparency and integrity.”

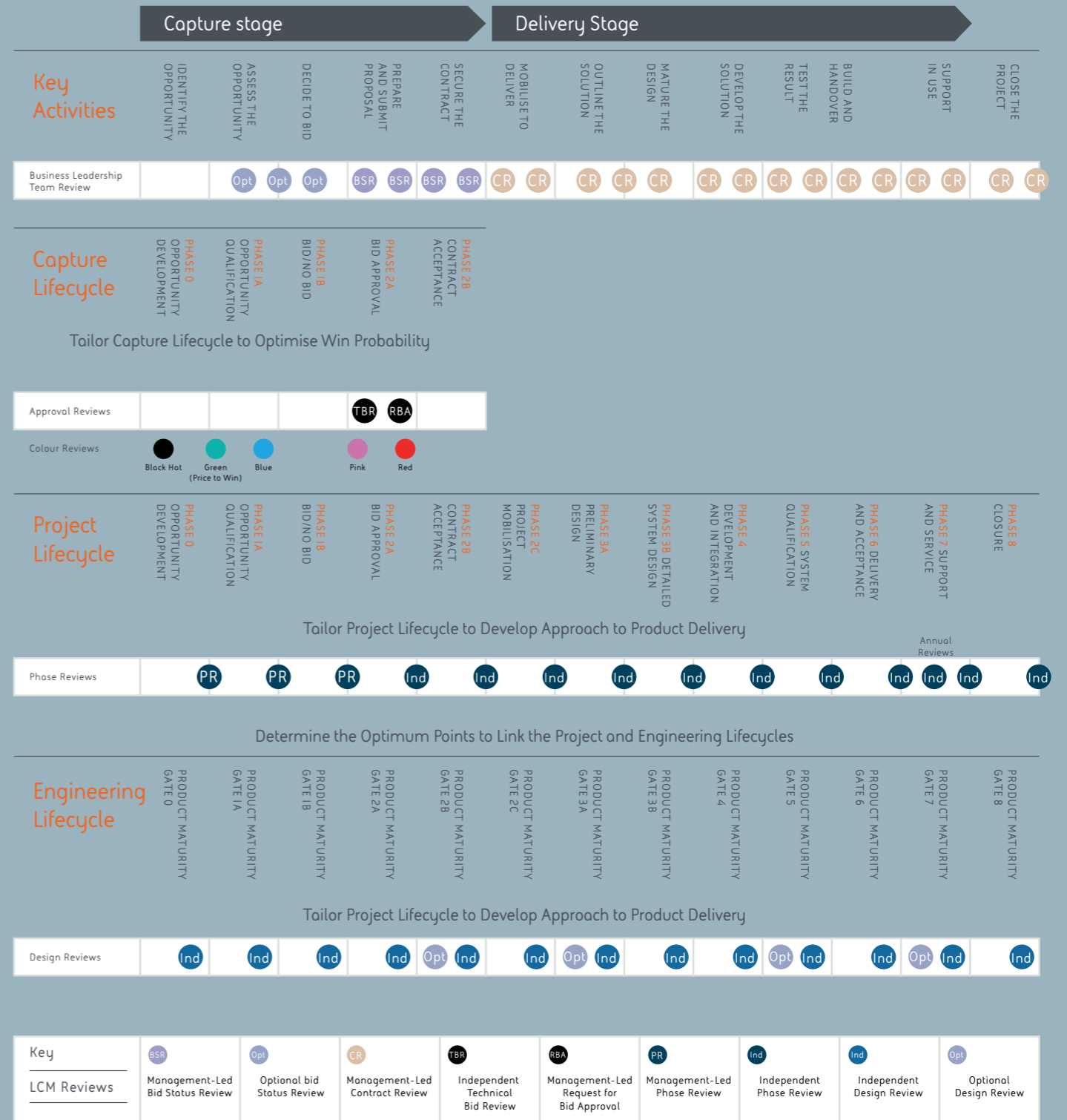
Andy Lethbridge,  
Global Consulting Director



## How we work

For us, working with clients is all about being consistent and robust, yet flexible. Our unique delivery and assurance framework ensures that all projects are managed to consistently high standards, while giving the customer choice over delivery methods and commercial models. This allows us to organise delivery and account teams around the customer and make sure their perspective is understood and central to the way we work. We see our work with clients as a partnership, and want them to feel like we're an extension of their team that brings new expertise, experience and thinking.

# Project Lifecycle Coupling Diagram



### Our Lifecycle Management (LCM)

Our Lifecycle Management approach includes a series of defined guidance and checkpoints, which act as the focal point for interactions between the delivery team and account management. By having set points, we ensure we consistently hit deadlines. LCM also determines the assurance and oversight activities at each stage of a project to help teams make the right decisions at the right time, providing the right levels of senior experience and expert input to exceed client expectations. From start to finish, our project managers take responsibility for client satisfaction, client communications and the timely delivery of successful projects. Meanwhile, our account managers guide the project within the context of the long-term client relationship. We employ the most appropriate delivery method for each project and client, choosing from Unified Process (UP), Scrum or Waterfall. Regardless of the specific delivery method, our delivery team will follow the same set of principles for software and product delivery:

- Prioritise the parts of the solution that are deemed high risk or contain areas of uncertainty
- Build thin, vertical slices to prove the design of complex systems and then develop the breadth over following iterations
- Engage with end users as early as possible and use their experience to drive the process and assure acceptable releases
- Employ metrification to make progress reporting clear and enable better understanding of the impacts of change and uncertainty
- Test for quality, correctness and consistency throughout the project

By following the journey in the framework, you'll see how we consider every point, meaning a robust plan that puts our clients' minds at ease and allows them to see what and when will happen as we work towards a successful end goal.

### Measuring success

Our business hinges on the success of our customers. So how do we measure that success? At BAE Systems Digital Intelligence, we're all about listening. We want to hear about where we can improve just as much as where we've surpassed expectations. We want to look into the nuts and bolts to fully understand each part of every project. It's why we operate an independent customer satisfaction process (CSAT) for our consulting work, there to gather feedback from our clients. We refuse to be complacent. We use the results of CSAT to identify specific areas for improvement to constantly better ourselves and the value of our work. Internally, we treat this as the most accurate measurement of our effectiveness and review it at an executive board level. It's serious, imperative business.



### Career development

Given that we're only as strong as our people, we have developed a competency model to help support performance and career development. This framework enables our people to make informed decisions about their strengths, development areas and the type of work and roles that will enable them to build their career successfully. It also reflects our values and culture by placing additional emphasis on knowledge sharing, ethics and relationship building.

## Section 3: How do we bring out the best in people?

“ Diversity, Equity and Inclusion (DE&I) can be managed as a business problem like any other. That means reviewing the key areas, identifying the problem, developing a solution and then implementing it. It's essential during this process to engage closely with employees at all levels to ensure the scale of the problem is fully understood and the solution is fit-for-purpose. Once developed, it should be evaluated repeatedly to allow for adjustments to fix any deficiencies. When you create a workplace that puts continuous understanding and improvement at the heart of its DE&I plan, you set the foundation necessary to provide a culture of inclusion and belonging. If you can achieve that, you will offer endless opportunities for greatness and success for your people. ”

Theresa Palmer

Global Head of DE&I at BAE Systems Digital Intelligence

We can only exceed customer expectations and deliver consulting excellence if we have the people to do so. We know that we're only as strong as our people, which is why we choose our consultants carefully, and continually invest in their professional growth. We also recognise that a diverse workforce brings different backgrounds, experiences and ideas, and an inclusive environment means everyone feels comfortable bringing their own diversity of thought to the table. We know that this is critical to the future success of our business, and our commitment diversity and inclusion isn't just a case of box-ticking. We refuse to stop here, and will continue to focus on this vital commitment.





### Personal effectiveness and leadership competencies

Having a common set of competencies across our consulting team is essential to ensure that we're clear and consistent about the behaviours and skills that are expected of our people. However, it's important to note that consulting involves a broad group of people who do very different things! Because of that, this model has built in flexibility, to allow people to specialise in different quadrants or competency groups. Our consultants don't have to demonstrate each and every competency to progress in their careers: we look instead for consistently demonstrating strength areas at a high level.

This flexibility has led to an increase in self-assessment and independence from our consultants. We encourage them to consider how they develop, progress through a grade and how their level of competency will change. Starting at an entry level, all the way through to consistently demonstrating that you are competent in that area. Our 'Consulting Skills' and 'Competencies Framework' provide granular and specific career level guidance for what a consultant needs to know and be able to do. Consultants use this tool as a way of assessing their ability and identifying areas for development in support of their personal progression.

There are opportunities for our people to develop skills and competencies internally through involvement in the work of their discipline. This allows our people to focus on a range of specialisms, be it leadership and management or subject matter expertise. It's a case-by-case process that puts the employee at the centre of the decision-making and maintains a focus on building cohorts of excellent managers, industry-respected expert practitioners and subject matter experts. We are a people and knowledge business, and we invest equally in both to have the propositions and expertise our customers seek.



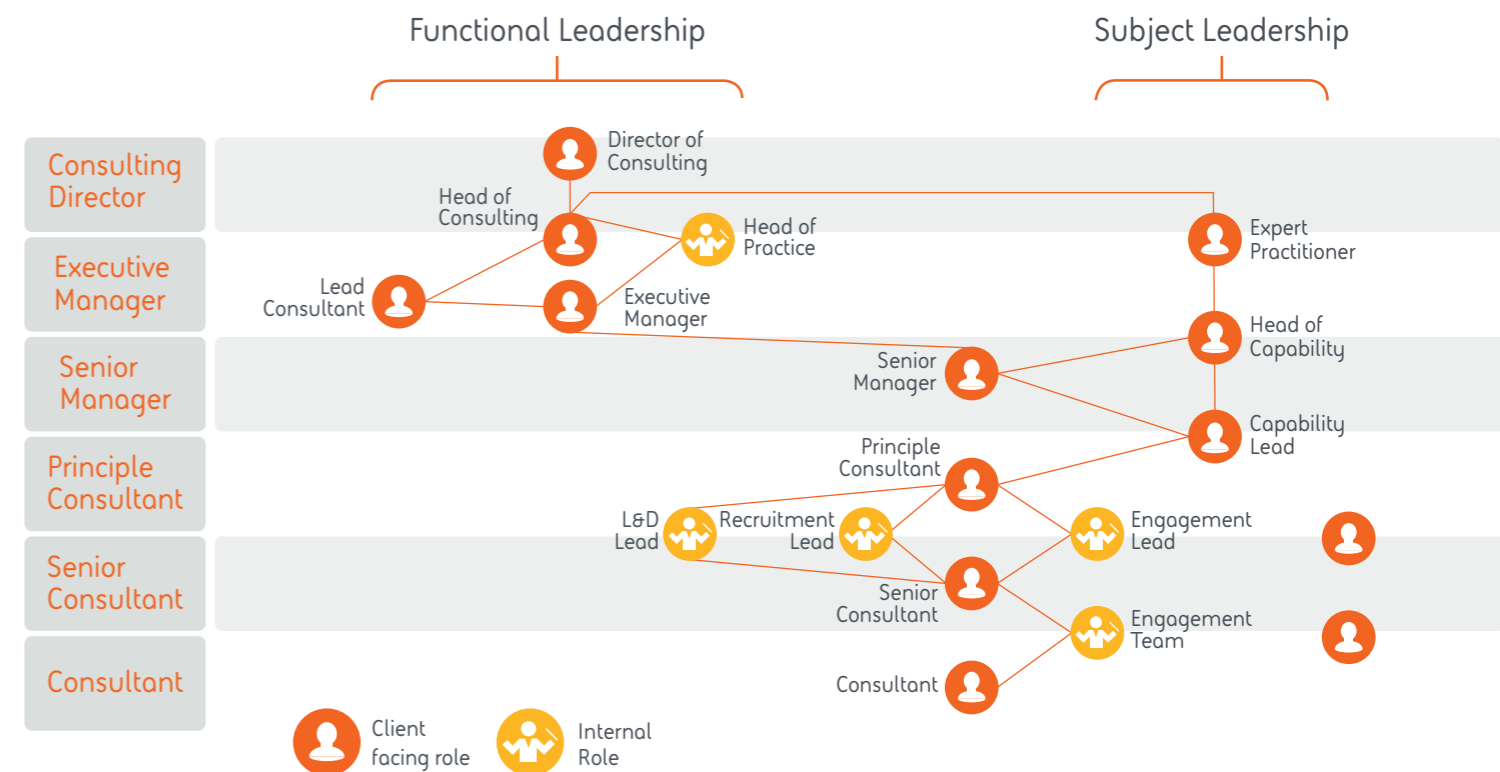
Our learning and development frameworks are combined into a continual professional development map that provides our people with clarity on the development journey they will undertake as they grow with us. This sets out the skills and knowledge that they will develop and the different learning interventions available to them. This includes clear links into chartership such as Chartered Management Consultant.

### Continuous training and education

Training and education is a key way for our employees to grow and develop. Our skills based disciplines are responsible for developing internal training courses on core subject areas, and these are delivered through a variety of mechanisms such as self-serve online, online classroom, one-to-one coaching and classroom-based educational programmes. What's more, our consultants have access to thousands of written and audio-visual learning courses on our e-learning portal. All of this training is based around specific case studies, the idea being that learnings can be applied to multiple situations.

We also develop and deliver a series of specialist intensive academies over four to six weeks, tailored to teach cutting-edge skills to new entrants to the industry, as well as cross-train those coming in from other areas of work.

Furthermore, we provide training that ensures we conduct ourselves to the highest ethical standards.



## Section 4: How do we help our people to do the right thing?

The culture of ethical behaviour we constantly work to embed is about being part of an organisation where we know what is expected of us. We work to ensure everyone feels guided and supported to make responsible decisions, and our Code of Conduct defines the standards and behaviours we aspire to every day. BAE Systems Digital Intelligence is committed to a culture where individuals can speak up confidently if they have questions or concerns. The establishment of our 'Employee Voice Forum' is testament to this desire for open dialogue throughout the organisation. This is a culture that underpins our company values. This is a culture we are proud of. Through this, we continue to deliver the high standards of business conduct that our customers, shareholders, partners and colleagues expect of us – and deserve.

### Avoiding conflicts of interest

As part of a large and highly successful international group of companies that operates across many business sectors, our employees could potentially face conflicts of interest. Due to the risk to our corporate reputation posed by a conflict of interest, or the perception of one, conflict of interest has a dedicated section in our Code of Conduct document. Employees can also take advice from their manager or the corporate Legal department, HR department or local Ethics Officer. This supportive culture is important – we never want any employee to feel unsupported or isolated in their decisions.

### Empowering communities

Outside of our day job, we're committed to making a positive social and economic contribution to the communities in which our staff work and live. We contribute to charities and good causes through sponsorship and donations, focusing on organisations that support our customers: the Armed Forces and their families, and educational groups, including those encouraging young people within the fields of science, technology, engineering and maths (STEM).

### Sustainability

We're also committed to reducing our environmental impact. Staff are encouraged to consider the effects of what they do and we help every employee to lessen the environmental footprint of the company through simple but practical activities.

## Section 5: Why does all of this matter?

“We hope we can show you just what we mean when we say that **we live and breathe consulting excellence.**”

Consulting excellence is standard here at BAE Systems Digital Intelligence, and we appreciate that the bar is constantly being raised. It is why our drive for excellence is relentless.

### Consulting excellence means a lot to us.

- It means that we work closely with clients to deliver above and beyond what they expect
- It means customer success is celebrated, before we regroup and analyse how we can do even better next time
- It means that our collective diversity of thought is empowered. People are encouraged to think differently and develop in the way that best suits them
- It means that our people are confident in raising issues, and know where to look for support
- It means we have processes and programmes in place that aim to make the world a safer and more secure place for everyone

We're really proud of our company and we're keen to show you why. Whether you're a company looking to work with us or a prospective employee, we hope we can show you just what we mean when we say that we live and breathe consulting excellence.

## We are Digital Intelligence

BAE Systems Digital Intelligence is home to 4,600 digital, cyber and intelligence experts. We work collaboratively across 16 countries to collect, connect and understand complex data, so that governments, nation states, armed forces and commercial businesses can unlock digital advantage in the most demanding environments. Launched in 2022, Digital Intelligence is part of BAE Systems, and has a rich heritage in helping to defend nations and businesses around the world from advanced threats.

BAE Systems Digital Intelligence  
Surrey Research Park  
Guildford  
Surrey, GU2 7RQ  
United Kingdom  
T: +44 (0) 1483 816000

BAE Systems Digital Intelligence  
8000 Towers Crescent Drive  
13th Floor  
Vienna, VA 22182  
USA  
T: +1 720 696 9830

BAE Systems Digital Intelligence  
Malta Office Park  
ul. Abpa A. Baraniaka 88  
Poznan  
61-131  
Poland  
T: +44 (0) 330 158 3627

BAE Systems Digital Intelligence  
Level 2  
14 Childers St  
Canberra  
ACT 2601  
Australia  
T: +61 (0) 2 9053 9330

BAE Systems Digital Intelligence  
Level 28, Menara Binjai  
2 Jalan Binjai  
Kuala Lumpur  
50450  
Malaysia  
T: +60 327 309 390

**BAE Systems, Surrey  
Research Park, Guildford,  
Surrey, GU2 7RQ, UK**

E: [learn@baesystems.com](mailto:learn@baesystems.com)

W: [baesystems.com/digital](https://baesystems.com/digital)



[linkedin.com/company/baesystemsdigital](https://www.linkedin.com/company/baesystemsdigital)



[twitter.com/BAES\\_digital](https://twitter.com/BAES_digital)

Copyright © BAE Systems plc 2023. All rights reserved.

BAE SYSTEMS, the BAE SYSTEMS Logo and the product names referenced herein are trademarks of BAE Systems plc.

BAE Systems Applied Intelligence Limited registered in England & Wales (No.1337451) with its registered office at Surrey Research Park, Guildford, England, GU2 7RQ.

No part of this document may be copied, reproduced, adapted or redistributed in any form or by any means without the express prior written consent of BAE Systems Digital Intelligence.

**BAE SYSTEMS**